

Home

Introduction

Accommodation

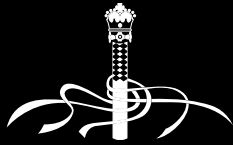
Location

Gallery

Contact

Exit

To navigate this document,
please click on the tabs, left



No.1 The Mansions

KENSINGTON LONDON

A white line-art illustration of a classical building facade on a black background. The central window contains the text 'N° 1 THE MANSIONS'. The facade features columns, a pediment, and decorative moldings.

N° 1
THE MANSIONS

ELEGANT SERVICED APARTMENTS

ELEGANT SERVICED APARTMENTS



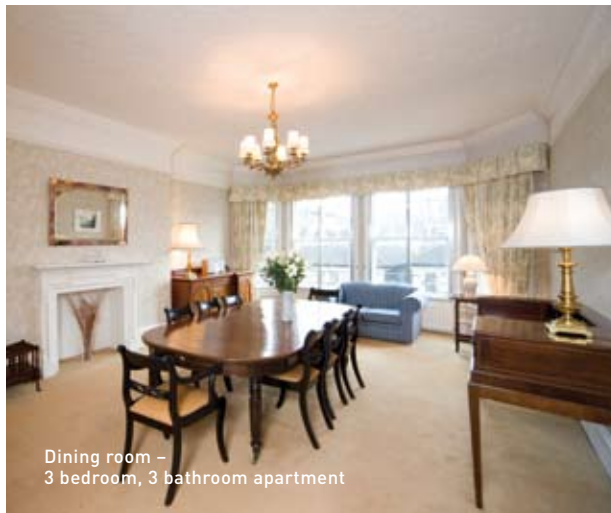
No. 1 The Mansions, located in London's Royal Borough of Kensington and Chelsea, offers a wide selection of serviced apartments designed to provide comfort, privacy and exceptional value. Whether you are travelling on business or leisure, our aim is to provide you with the feeling that you have your very own apartment in central London.

All of our studio, 1, 2, 3 and 4 bedroom apartments have been furnished to meet the needs of the discerning visitor and are well suited to family gatherings or business meetings.

The Mansions is an elegant property built at the end of the 19th Century in an attractive conservation area. The Mansions now offers a superb selection of extremely comfortable apartments, each individually designed and decorated.

page: [1](#) [2](#) [3](#)

next [▶](#)



Dining room –
3 bedroom, 3 bathroom apartment



Living room –
3 bedroom, 3 bathroom apartment

ELEGANT SERVICED APARTMENTS



Bedroom with en suite bathroom –
3 bedroom, 3 bathroom apartment

Accommodation is spacious, with a variety of sizes and layouts available, from studio and one bedroom apartments, to 2 bedroom 1 or 2 bathroom apartments, to 3 bedroom 2 or 3 bathroom apartments or even 4 bedroom and 3 bathroom apartments.

The apartments range in design from open plan to those with large separate kitchens, dining and living rooms.

[← prev](#)

page: 1 **2** 3

[next >](#)

ELEGANT SERVICED APARTMENTS

Each apartment is unique in layout and décor, but all are furnished in a traditional style with elegant living rooms, spacious bedrooms, comfortable bathrooms and fully fitted kitchens with washer/dryer.

Apartments offer a 5 day a week maid service and reception staff are on hand to arrange theatre tickets, sightseeing, restaurant reservations, car hire, chauffeur driven cars and airport transfers.

In addition, apartments include complimentary wireless broadband so guests can stay connected with colleagues, friends and family.

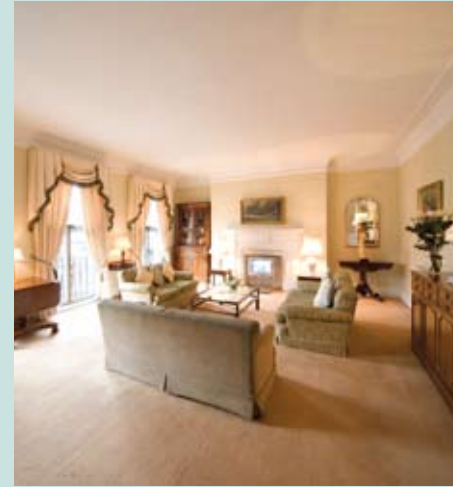


Living and dining room –
2 bedroom, 2 bathroom apartment



The Mansions is located within 5 minutes walk of Earls Court underground station, on the Piccadilly and District lines, giving you convenient access to all that London has to offer.

There are numerous cafés and restaurants in this lively and cosmopolitan part of London, suiting all budgets. The superb shopping of the Westfield Centre, Europe's largest shopping mall, Kings Road Chelsea and High Street Kensington are a short distance away, with Harrods and Knightsbridge also close by. London's major attractions are easily reached, with three of the finest museums only ten minutes away.



Please click on each picture to enlarge. Press the back button to return to this page.



The freedom and convenience of a serviced apartment at The Mansions makes it an ideal choice for both corporate and leisure travellers. Whether you are attending an exhibition at nearby Earls Court or Olympia, exploring London with your family, or require an extended stay with ample space in central London, The Mansions gives you the freedom to live as you like.

Ü^ |^•^} çá/Á Á^, Á^ææ) áÓ^ K

Ö :{|} çÁ/æ^/Šçá
 Ú@ÆJAI FÁI Í F
 Ó^ {O^{|} çÈ È:
 Y K , È^{|} çÈ È:

Living room -
3 bedroom, 3 bathroom apartment

[Back](#)



Bedroom with en suite bathroom -
3 bedroom, 3 bathroom apartment

[Back](#)



Living room -
3 bedroom, 3 bathroom apartment

[Back](#)



Bathroom -
2 bedroom, 2 bathroom apartment

Back



Kitchen and dining room -
3 bedroom, 3 bathroom apartment

[Back](#)



Dining room -
3 bedroom, 3 bathroom apartment

Back



Living and dining room -
2 bedroom, 2 bathroom apartment

Back

