



ICEHOTEL® Winter 2006

9th of December 2005–30th of April 2006

PRICE LIST

Warm accommodation. Choose from a range of options. Combine a cold night at the ICEHOTEL with one of our various types of warm accommodation.

Includes breakfast, warm clothing and a morning sauna.



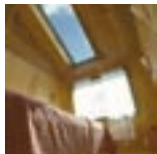
Kaamos Hotel Rooms. Double occupancy rooms furnished in a modern Scandinavian style. Double bed, washroom with shower and WC. Twin beds instead of double bed in some rooms.

Dec. 9–Dec. 21, 2005	Dec. 22, 2005–Jan. 1, 2006
Jan. 3–Jan. 31, 2006	Feb. 1–Mar. 31, 2006
Apr. 1–Apr. 30, 2006	
SEK 2,800/room, 1-2p	SEK 2,900/room, 1-2p



Cabins. Two separate bedrooms – one with twin beds and one with a bunk bed. Living room with fridge, kettle, TV and phone.

Dec. 9–Dec. 21, 2005	Dec. 22, 2005–Jan. 2, 2006
Jan. 3–Jan. 31, 2006	Feb. 1–Mar. 31, 2006
Apr. 1–Apr. 30, 2006	
SEK 2,500/cabin, 1-2p + 750 kr/person	SEK 2,600/cabin, 1-2p + 750 kr/person



Northern Lights Cabin. Two separate bedrooms, one single and one double – three beds in total. (Double bed, not twin beds.) Bedrooms have skylights offering a view of the midnight sun or the Northern Lights. Living room with fridge and kettle, TV and phone.

Dec. 9–Dec. 21, 2005	Dec. 22, 2005–Jan. 2, 2006
Jan. 3–Jan. 31, 2006	Feb. 1–Mar. 31, 2006
Apr. 1–Apr. 30, 2006	
SEK 2,800/cabin, 1-2p + 750 kr/person	SEK 2,900/cabin, 1-2p + 750 kr/person

Cold accommodation. Sleep in a sleeping bag on a bed built of snow and ice. You will be awakened with a cup of hot lingonberry juice served at your bedside.

Includes breakfast, warm clothing and a morning sauna.



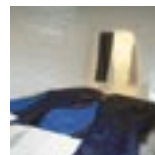
ICEHOTEL De luxe Suite. Surround yourself with ice art in the form of fantastic design and sculptures. Spacious accommodation for a special occasion.

Dec. 9–Dec. 21, 2005	Dec. 22, 2005–Jan. 2, 2006
Jan. 3–Jan. 31, 2006	Feb. 1–Mar. 31, 2006
Apr. 1–Apr. 30, 2006	
SEK 5,900/suite, 1-2p	SEK 6,000/suite, 1-2p



ICEHOTEL Suite. Unique rooms decorated with ice art and sculptures.

Dec. 9–Dec. 21, 2005	Dec. 22, 2005–Jan. 2, 2006
Jan. 3–Jan. 31, 2006	Feb. 1–Mar. 31, 2006
Apr. 1–Apr. 30, 2006	
SEK 3,800/suite, 1-2p + SEK 750/person up to 3p	SEK 3,900/suite, 1-2p + SEK 750/person up to 3p



ICEHOTEL Double Rooms.

Dec. 9–Dec. 21, 2005	Dec. 22, 2005–Jan. 2, 2006
Jan. 3–Jan. 31, 2006	Feb. 1–Mar. 31, 2006
Apr. 1–Apr. 30, 2006	
SEK 2,800/room, 1-2p	SEK 2,900/room, 1-2p



ICEHOTEL Family Rooms. Extra-wide bed, with room for at least four people.

Dec. 9–Dec. 21, 2005	Dec. 22, 2005–Jan. 2, 2006
Jan. 3–Jan. 31, 2006	Feb. 1–Mar. 31, 2006
Apr. 1–Apr. 30, 2006	
SEK 5,600/room, 1-4p + SEK 750/person up to 6 p	SEK 5,700/room, 1-4p + SEK 750/person up to 6 p

Children's prices, ICEHOTEL (applies to warm or cold accommodation shared with parents): Children aged 0–6: No charge.
Children aged 7–12: SEK 375 per child per night.

Activities. Experience our vast range of ICEHOTEL Adventures during your stay. The winter season of 2006 offers you snowmobile safaris, dog-sled excursions and Saami cultural events.



SNOWMOBILE FROM KIRUNA AIRPORT TO JUKKASJÄRVI. When you arrive at Kiruna Airport you are met by our guide. Must be pre-booked.

Daily: In conjunction with arrival times. Trip duration is about 2.5 hours. **Price: SEK 1,750/person** – 2 persons per snowmobile. Surcharge for individual snowmobile: SEK 595/person.



SNOWMOBILE EXCURSION 1.5 HOURS. Guided excursion through the ancient forest that surrounds Jukkasjärvi.

Daily: 4:30–6:00 p.m. **Price: SEK 940/person** – 2 persons per snowmobile. Surcharge for individual snowmobile: SEK 495/person.



NORTHERN LIGHTS EXCURSION 3.5 HOURS. Guided snowmobile excursion in search of the Northern Lights.

Daily: Dec. 1–Mar. 25, 7:00–10:30 p.m., Mar. 26–Apr. 20, 8:00–11:30 p.m. **Price: SEK 1,350/person** – 2 persons per snowmobile. Surcharge for individual snowmobile: SEK 595/person.



WILDERNESS SAFARI 3.5 HOURS. Extra-long guided snowmobile excursion around the ancient forest that surrounds Jukkasjärvi, including traditional outdoor lunch.

Daily: 11:45 a.m.–3:45 p.m. **Price: SEK 1,350/person** – 2 persons per snowmobile. Surcharge for individual snowmobile: SEK 595/person.



SNOWMOBILE EXCURSION INCL. OVERNIGHT STAY. Guided two-day excursion including overnight stay at wilderness camp. **Departs:** (Day 1): Fridays 4:30 p.m., Saturdays 4:30 p.m. **Ends** (Day 2): Saturdays 11:00 a.m., Sundays 11:00 a.m. **Price: SEK 3,295/person** – 2 persons per snowmobile. Surcharge for individual snowmobile: SEK 995/person (recommended, given the duration of this excursion).



*** SNOWMOBILE EXCURSION IN MOOSE WINTER GRAZING LAND.** We transport ourselves by snowmobile to the heart of the winter grazing land of the moose. Exclusive excursion for a maximum of 8 p/group.

Daily: 8:30 a.m. (about 4–5 hours).

Price: SEK 2,250/person – 2 p per snowmobile. Surcharge for individual snowmobile: SEK 750/person.

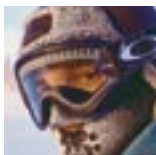


WILDERNESS EXCURSION IN SEARCH OF MOOSE. Transfer by minibus to the winter grazing lands of the moose. If circumstances allow, we should be able to take photographs. Tour can be done as a departure transfer.

Daily: 8:30 a.m. (about 3–3.5 hours).

Price: SEK 995/person.

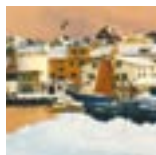
Arctic Trail. Come with us on an unusual and fascinating snowmobile safari, far off the beaten path.



NORTHERN TRIANGLE – CROSS THREE NATIONAL BORDERS IN THREE DAYS. This excursion goes from Lainio, to ICEHOTEL Jukkasjärvi, to Kilpisjärvi, to Skibotten at the edge of the Arctic Ocean, to Kilpisjärvi again, on to Karesuando, and back to Lainio. Total distance: 550 kilometers. **Departures in 2006:** Mar. 8–12, Mar. 17–21, Mar. 25–29, Apr. 1–5, Apr. 8–12. **Price: SEK 20,395/person.**



EXCLUSIVE GASTRONOMIC SNOWMOBILE EXCURSION THROUGH LAPLAND. This excursion goes from Kiruna Airport to Kebnekaise, to Nikkaluokta, to Lappesuando, to Vittangivaara, and finally to ICEHOTEL. Total distance: 245 kilometers. **Departures in 2006:** Apr. 1–4 and Apr. 8–11. **Price: SEK 12,100/person.** SEK 9,000 per person if you have your own snowmobile.



FROM ICEHOTEL TO THE ARCTIC OCEAN THROUGH THREE COUNTRIES. This excursion goes from ICEHOTEL to Råstojaure, to Kilpisjärvi, via Arctic fiords, to Soppero, and back to ICEHOTEL. Total distance: 480 kilometers. **Departures in 2006:** Mar. 15–19, Apr. 19–23. **Price: SEK 17,400/person.** SEK 11,500/person if you have your own snowmobile.

About Arctic Trail excursions: The prices include all transfers, accommodation in cabins/wilderness camp and/or hotel rooms as per program, one snowmobile per person, all fuel and oil, three meals a day plus guide throughout the safari. Departures require a minimum of six participants. In case of fewer than six, we reserve the right to cancel the excursion. ICEHOTEL will inform you of any cancellation not later than six weeks in advance.

Surcharges: Everything in addition to the items listed above are to be paid in cash or by credit card. Drinks in addition to lingonberry drink and ice water are not included. Deductible for snowmobile accidents/damage: SEK 5,000.

Payment: The entire amount must be deposited into our account not later than 30 days prior to arrival. **Equipment/clothing:** We provide all guests with a warm snowmobile suit, winter boots, socks, a hat/helmet, and mittens. Guests must bring their own underwear.





DOG-SLED FROM AIRPORT. An exotic way to travel from the airport to ICEHOTEL. Must be pre-booked.

Daily: In conjunction with flight arrivals. Season start varies depending on the supply of snow.

Price: SEK 5,125 for your own dog-team – max. 4 persons per team from the airport and 3 per sled to the airport.



DOG-SLED EXCURSION 1.5 HOURS. Seat yourself comfortably in the sled and head silently into the wilderness. Includes stop en route for coffee and cake by a campfire.

Daily: 9:30–11:00 a.m. and 1:00–2:30 p.m.

Price: SEK 1,155/person.



✳ **EXCLUSIVE DOG-SLED EXCURSION INCLUDING KENNEL VISIT.** This excursion includes a two-course outdoor lunch and concludes with a visit to the kennel. Total distance is about 28 kilometers; duration about 4 hours.

Daily: 11:00 a.m.–3:00 p.m.

Price: SEK 2,575/person.



Optional feature of the Exclusive Dog-sled Excursion: **DRIVE YOUR OWN DOG-TEAM!** After some brief instructions, you should be ready to take off on an excursion, following after your guide.

Daily: 11:00 a.m.–3 p.m. **Surcharge** for “Drive your own dog-team”: SEK 865/person.



RAÍDU – SAAMI CULTURE AND RIDING A SLEIGH PULLED BY REINDEER. Get to know the everyday life and rich culture of the Saami. See what it's like to drive a sleigh pulled by reindeer. Traditional Saami food prepared over a campfire in a káta – a Saami-style tent. **Daily:** 9:30 a.m.–1:00 p.m. and 2:30–6:00 p.m. (The 2:30 p.m. excursion is not available after March 26, 2006.)

Price: SEK 1,250 per person.



✳ **DRIVE YOUR OWN REINDEER SLEIGH, 6 HOURS.** Meet the reindeer and get to know the Saami culture in its natural setting. Max. eight people per excursion. Traditional Saami lunch fare prepared over a campfire.

Fridays, Saturdays and Sundays 9:00 a.m.–3:00 p.m.
Price: SEK 2,280/person.



SNOWSHOE EXCURSION: Five-minute drive by minibus to the foot of the mountain, where we strap on our snowshoes and hike up to the lookout point on the mountain, “Puiomonen.” An optional abseil back down the mountain is offered. Includes coffee/tea and home made bread.

Daily: 4:00–6:00 p.m. **Price:** SEK 750/person



ICE SCULPTING: Using sharp tools guided by professional ICEHOTEL artists, you will be guided into the magical world of ice sculpture (minimum age 12).

Daily: 11:00 a.m.

Price: SEK 490/person.

ICEHOTEL ADMITTANCE, DAYTIME VISITORS IN 2005/2006

Adult	SEK 120/person
Child (up to 12 years)	SEK 60/person
Senior, student, military trainee	SEK 100/person
Group (10 or more people)	SEK 100/person
Special guided tours (min. 10 people)	SEK 260/person

OTHER ICEHOTEL FEES

Sauna and hot tub (private use)	SEK 2,000/1–4 people
Each additional person	SEK 150/person
Wood-heated sauna at Hembygdsgården in Jukkasjärvi	SEK 1,500/1–4 people
Each addition person	SEK 150/person
Transfer to/from Kiruna Airport	SEK 100/person, each way

EQUIPMENT RENTAL

	Day 1	Following days
Skis, incl. poles and ski boots	SEK 295	SEK 175
Snowshoes incl. poles	SEK 245	SEK 150
Backpack with skis/snowshoes	SEK 45	SEK 30
Backpack	SEK 85	SEK 55
Forehead lamp (batteries not incl.)	SEK 65	SEK 45
Ice-fishing rod, spoon, bait, drill, fishing permit	SEK 275	SEK 160

HIRE A GUIDE (min. 4 hours)

4 hours	Additional hours
SEK 1,850	SEK 295/hour

Guests are expected to pay full replacement value or cost of repair for lost or damaged equipment, prior to their departure.

CONVENIENT ON-SITE SHOPPING. At the ICEHOTEL store you will find microfleece underlayers, middle layers such as warm fleece jerseys and woolen garments, and thick down jackets, hats and mittens, and much more. You can order the equipment you will need at the same time as you book your visit.

The equipment you order will be delivered to you when you check in. For products and prices, please refer to www.icehotel.com



Booking tips.

It is a good idea to book your activities and excursions at least three weeks before your arrival, as they fill up quickly.

If you are planning your own trip, we encourage you to ask us for help in scheduling activities and excursions. When you book activities in conjunction with your arrival or departure, you need to consider transfer time to/from the airport or train station.

For groups, our Group and Conference Department would be happy to design tailor-made programs of accommodation, activities, meals and transfers, in accordance with your preferences.

We look forward to your visit to ICEHOTEL!

GENERAL TERMS AND CONDITIONS FOR RESERVATIONS AND CANCELATIONS

ICEHOTEL®

Booking: When you book a vacation at ICEHOTEL® you will receive a notice of confirmation/invoice with a unique reservation number. This notice of confirmation is your contract with ICEHOTEL and it specifies the products, services, times and terms you have agreed on with ICEHOTEL.

Please read your notice of confirmation carefully and ensure that all times and products/services have been booked in accordance with your preferences. The aim of this is to avoid misunderstandings.

Remember that the information on the notice of confirmation is the contract between you and ICEHOTEL; any references to agreements over and above what is stated in the confirmation will not be considered.

TERMS AND CONDITIONS APPLYING TO PAYMENT FOR BOOKING MADE MORE THAN 30 DAYS PRIOR TO ARRIVAL:

Advance payment: You confirm your booking by paying an advance of 25% of the total price. The advance must be received by ICEHOTEL not later than 14 days after the date of booking. If this advance payment is not received, ICEHOTEL reserves the right to cancel the reservation without prior warning. Once ICEHOTEL has received the advance payment, the reservation will be considered confirmed. Advance payment is not refunded.

Final payment: The remaining amount/final payment must be received by us not later than 30 days prior to your arrival. If payment is not received, ICEHOTEL reserves the right to cancel the reservation without prior warning.

TERMS AND CONDITIONS APPLYING TO PAYMENT FOR BOOKING MADE LATER THAN 30 DAYS PRIOR TO ARRIVAL:

Final payment: For bookings made less than 30 days prior to your arrival, the total amount must be paid immediately. The amount must be received by ICEHOTEL not later than 10 days after the booking date. If payment is not received, ICEHOTEL reserves the right to cancel the reservation without prior warning.

Cancellation: For cancellation received more than 30 days prior to arrival, only the advance payment of 25% of the total amount is charged. For cancellation received between 29 and 15 days prior to arrival, 75% of the total amount of the reservation is charged. For cancellation received later than 14 days prior to arrival, 100% of the total amount of the reservation is charged.

Payment: You choose the payment method you prefer, in accordance with the terms and conditions stated above. Be sure, however, to always include your unique reservation number, so that we can quickly match the right payment to the right reservation.

Payment within Sweden may be deposited in our postal giro account, 380105-7, our bank giro account, 626-8999, or made by credit card on our website – refer to instructions at www.icehotel.com, under the Payment tab.

To contact us: Remember that the contact details and address you provide to us when you make the booking are the only way we have of contacting you. It is therefore extremely important that they be correct, and that you can indeed be reached using this information. It is your responsibility as a traveler to ensure that we can reach you to provide you with any information you might need during the period until your visit.

ICEHOTEL ACTIVITIES

Come to the meeting point for each activity not later than 15 minutes before departure to meet your guide and check the equipment. Snowmobile suit, warm footwear, gloves and hat are provided on all excursions. A helmet is included in the snowmobile excursions. Two persons per snowmobile. Note that there is a minimum requirement of two adult participants on all excursions.

The supply of snow at the beginning and the end of every winter is a critical factor in scheduling of the season's excursions.

Child rates: Children up to 2 years ride free accompanied by their guardian; ages 3–12 are eligible for a 50% discount on snowmobile excursions, dog-sled trips and Saami events. One child per adult.

Other facts: Surcharge for individual snowmobile on excursions: SEK 495–995 per vehicle including fuel. All excursions include snowmobile insurance. Maximum deductible of SEK 5,000 per claim and snowmobile will be charged to the driver of any damaged snowmobile. Quoted prices apply through April 30, 2006; prices may change without notice. All outdoor activities in Lapland are dependent on the weather. If we are forced to cancel an activity on account of extreme weather conditions, an alternative activity that is more suited to the prevailing conditions will be provided. Payment for the cancelled activity will not be refunded. All prices include VAT.

Cancellation regulations: For any cancellation after 3:00 p.m. on the day before the start of the activity, 100% of the price will be charged. For any cancellation before 3:00 p.m. on the day before the start, 50% of the price will be charged, unless the place can be sold to another guest. Note that switching or changing activities is considered to be cancellation. Group and special reservations are subject to SHR regulations.